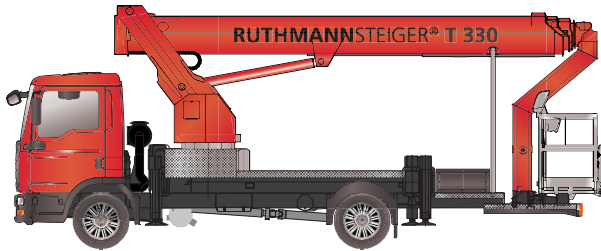


**RUTHMANN**  
professionals at work

## STEIGER® T 330



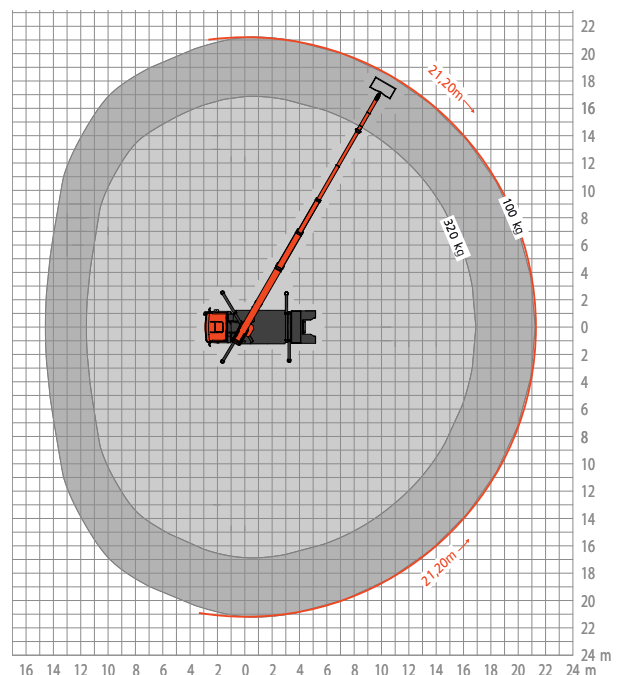
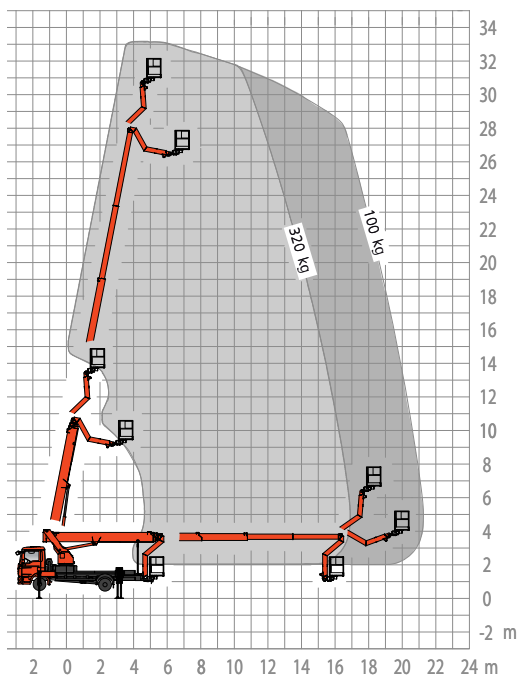
### RUTHMANNSTEIGER® T 330

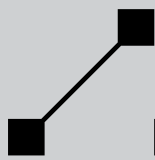
The plus factors platform

- 33,0-metre working height
- 21,2-metre lateral outreach at 100 kg cage load
- max. performance on 7.49 t to 18 t chassis (GVW)
- Multi bent profil steel boom technology with rigid turret that remains within the contours of the vehicle when pivoting
- Sturdy, hydraulic cage rotation device 2 x 90°
- Horizontal/vertical jacking mechanism for maximum versatility
- 185° jib (RÜSSEL®) swivelling range
- Compact vehicle length of only 8.79 metres
- 320 kg working cage capacity
- Information and diagnostic display also in working cage
- Automatic set-up/retraction mechanism, memory-positioning system
- and many other innovative features



For further information visit: [www.ruthmann.de/t330en](http://www.ruthmann.de/t330en)





**RUTHMANN**  
professionals at work

## STEIGER® T 330

Maximum performance data and optimum handling make the new **RUTHMANN STEIGER® T 330** the pinnacle of perfection in the 7.49 t (and up) truck-mounted aerial platform sector. The sensational 33-metre working height and impressive 21.2-metre lateral outreach greatly benefit aerial-platform rental companies, gardeners, landscapers, industrial cleaners and craftsmen. The T 330 permits operators to carry out assignments that once required the implementation of much larger machinery. It is easy to use and courses little instruction time.

The most notable feature of the newly-developed **STEIGER® T 330** is its ultra-modern multi bent profile boom system with a rigid turret that functions independently without any additional hydraulic mechanisms. When pivoting, the turret remains within the contours of the vehicle at all times. The T 330 offers maximum stability and usability and is very easy to maintain.

Working heights and lateral reaches are not the only important features on a professional truck-mounted

aerial platform. With a total vehicle length of only 8.79 metres and marginal 3.9-metre wheelbase, the **RUTHMANN STEIGER® T 330** is also very impressive in its basic position.

The cage concept is also totally new on the **STEIGER® T 330**. A variety of improvements offer workers more space and greater mobility. The generous carrying capacity of 320 kg can accommodate up to 3 people with tools. In addition and equipped as standard the built-in cage cleaning port and the cage tool-storage facilities are very practical in everyday situations. The sturdy 2 x 90° hydraulic cage-rotation device and 185° swivelling range of the jib (**RÜSSEL®**) are equally impressive. Maximum manoeuvrability is guaranteed even when working in difficult conditions.

The variable horizontal/vertical jacking mechanism with sturdy steel construction permits one-sided, complete or narrow jacking. Positioning at inclinations of up to 5° with automatic range limitations for jacking on slopes, assures easy handling and maximum safety

at the job site. These are very important factors when working in cramped city conditions.

With the T 330, jobs can be carried out very quickly because lifting, pivoting, and telescopic movements can be controlled and carried out at the same time.

Please contact us by phone, fax, or email. We would be happy to provide you with in-depth information about the range of services, advantages, and uses of our time-tested **STEIGER®** models.



RUTHMANNSTEIGER® T 330				
	Working height	33,00 m		Total length ≥ 8,79 m
	Lifting height	31,00 m		perm. siting inclination 5°**
	Lateral outreach	21,20 m*		Perm. total weight ≥ 7.490 kg
	Working cage size	1,70 x 0,86 m		Range of rotation 500°
	Working cage capacity	320 kg		Swivelling angle of the jib 185°
	Overall height ≥	3,56 m		Driving Licence C 1 / 3
* depending on load, angle of rotation and outfit ** with restriction of performance data				Wheelbase carrier chassis ≥ 3,90 m