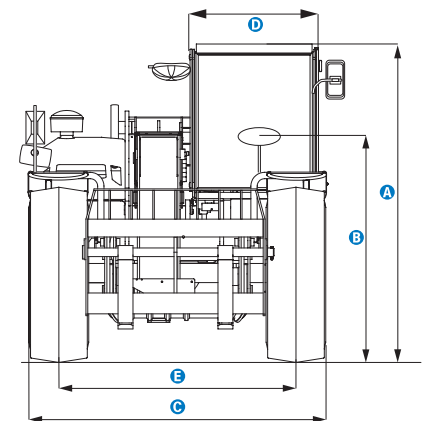
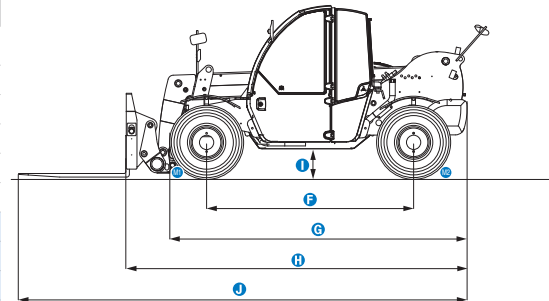


# Specifications

MODELS		GTH™-2506	
MEASUREMENTS	Metric	Imperial	
Lifting height maximum	5.79 m	19 ft	
Lifting capacity maximum	2,500 kg	5,511 lbs	
Lift capacity at maximum height	2,000 kg	4,409 lbs	
Lift capacity at maximum reach	900 kg	1,984 lbs	
Forward reach maximum	3.35 m	10 ft 12 in	
Reach at maximum height	60 cm	2 ft	
<b>A</b> Height	1.92 m	6 ft 4 in	
<b>B</b> Height at steering wheel	1.25 m	4 ft 1 in	
<b>C</b> Width	1.81 m	5 ft 11 in	
<b>D</b> Cab width	86 cm	2 ft 10 in	
<b>E</b> Track	1.5 m	4 ft 11 in	
<b>F</b> Wheelbase	2.32 m	7 ft 7 in	
<b>G</b> Length at front wheels	3.35 m	10 ft 12 in	
<b>H</b> Length at fork-holder plate	3.84 m	12 ft 7 in	
<b>I</b> Ground clearance	33 cm	1 ft 1 in	
<b>J</b> Overall length	5.04 m	16 ft 6 in	
<b>M1</b> Obstruction angle		90°	
<b>M2</b> Departure angle		60°	



PRODUCTIVITY		
Inside/outside turning radius	1.7 m/3.35 m	5 ft 7 in/11 ft
Break-out force (with 800 L shovel SAE J 732/80)	3,700 kg	8,157 lbs
Towing capacity at dynamometer*	3,100 kg	6,834 lbs
Drive speed max.	24 km/h	15 mph
Fork-holder plate rotation	130°	
Tyres (DIN 70361)	12-16.5" PR10 8 holes wheel disc	
Lifting/lowering speed*	7 sec./4 sec.	
Extension/retraction speed*	7 sec./4 sec.	

POWER AND TRANSMISSION		
Engine	Deutz D2011 L04W 4-cylinder diesel 68 hp (50 kW), stage III	
Transmission	Hydrostatic variable displacement pump linked to variable displacement motor. Both piston type.	
Service pumps	Boom & Control system gear pump type: 280 Bar, 70 L/min.	
Petrol tank capacities	60 L	13 gal
Engine oil capacities	10 L	2.2 gal
Hydraulic oil tank capacities	65 L	14 gal

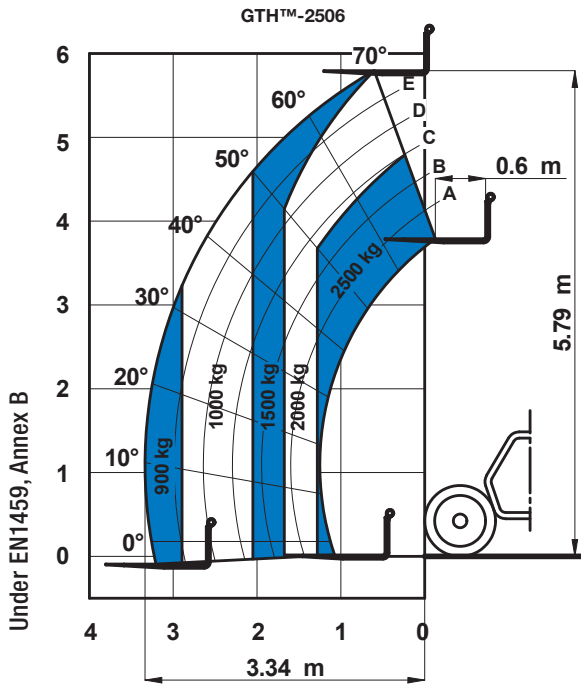
WEIGHT		
Weight**	4,450 kg	9,810 lbs

## STANDARDS COMPLIANCE

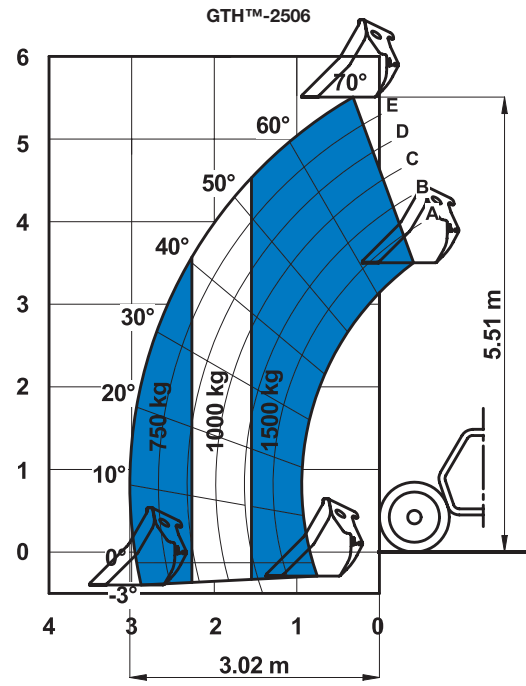
EU Machinery Directive 2006/42/EC  
 Operating cab conforms to ISO3471 (ROPS) and ISO3449 (FOPS)  
 Low emission engine conforms to EU Directive 97/68/EC Stage III and 2004/26/EC  
 Noise emission conforms to EU Directive 2000/14/EC (LpA=83 dB, LwA=103dB)  
 Vibration levels according to EN13059:2002 (hand-arm <2.5m/s<sup>2</sup>, whole body 0.44m/s<sup>2</sup>)

\* Without load

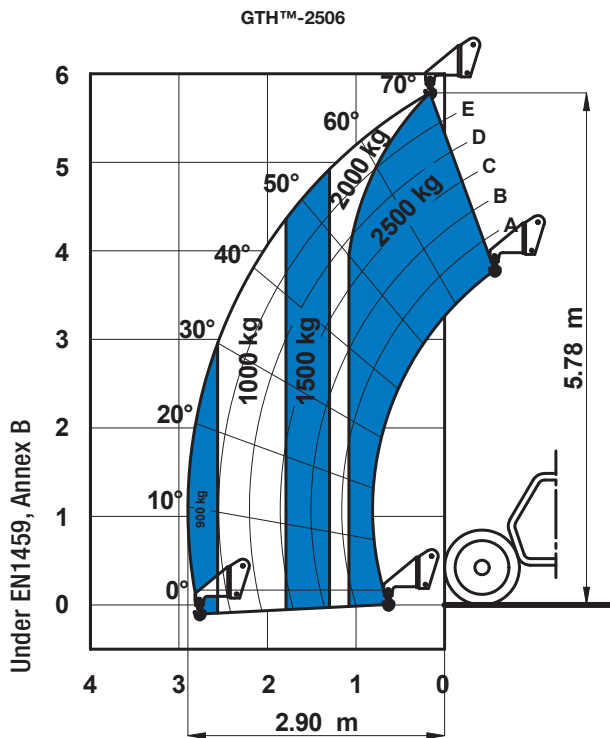
\*\* Weight will vary depending on options and/or country standards



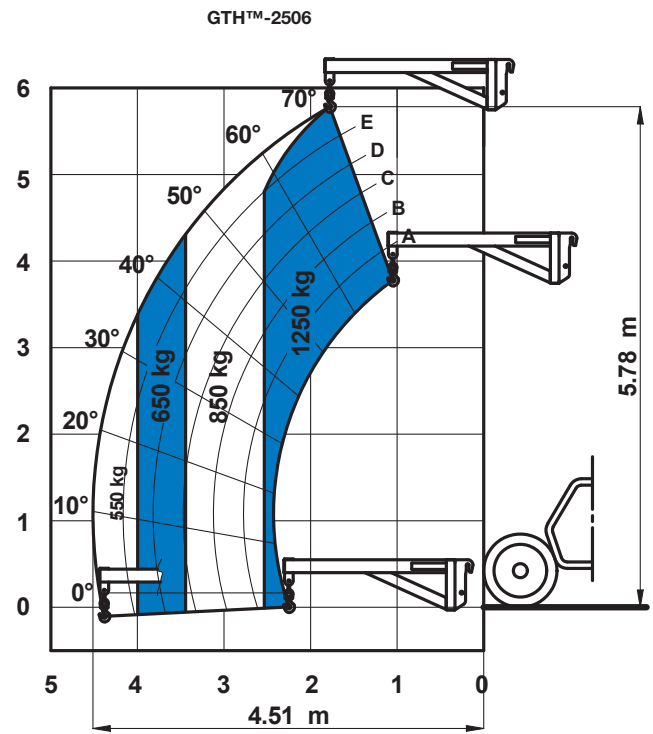
On wheels with forks



On wheels with 500 L/800 L shovel



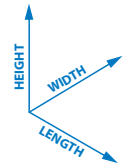
On wheels with 2.5t fixed hook on plate



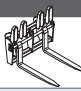
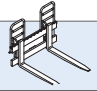

On wheels with 2m jib (mechanical)

# Specifications

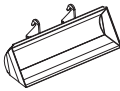



Dimension references




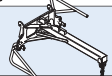
## FORK ATTACHMENTS

	Part number	Description	Payload	Width	Length	Height	Weight
	55.0750.0059	Floating forks	2,500 kg	1,285 mm	1,545 mm	940 mm	260 kg
	55.0750.0000	FEM 2 plate and forks kit	2,500 kg	1,235 mm	1,490 mm	970 mm	260 kg
	59.0601.5001	Hydraulic FEM 2 forks side-shift +/- 100 mm	2,500 kg	1,360 mm	1,600 mm	975 mm	355 kg

## BUCKET AND SHOVEL ATTACHMENTS

	Part number	Description	Width	Length	Height	Weight	Hyd. flow max.
	59.0201.9002	500 L loading shovel	2,036 mm	980 mm	810 mm	355 kg	
	59.0201.9003	800 L loading shovel	2,036 mm	1,175 mm	940 mm	420 kg	
	59.0400.0000	500 L concrete bucket manual discharge	1,110 mm	1,110 mm	1,320 mm	230 kg	
	59.0400.1000	500 L concrete bucket hydraulic discharge	1,110 mm	1,110 mm	1,320 mm	244 kg	65/250 (lt/min)/bar
	59.0401.2003	250 L concrete mixing bucket fully hydraulic	1,506 mm	795 mm	840 mm	460 kg	
	59.0400.7000	Brick holder basket	800 mm	1,110 mm	1,150 mm	120 kg	

## HANDLING AND LIFTING ATTACHMENTS

	Part number	Description	Payload	Width	Length	Height*	Weight
	59.0700.9004	2.5t fixed hook on plate	2,500 kg	1,335 mm	830 mm	910/1,110 mm	120 kg
	59.0802.3007	2m/1250 kg mechanical jib	1,250 kg	1,335 mm	2290 mm	800/1,080 mm	255 kg

\* Legs folded up/down

# Features

## STANDARD FEATURES

### MEASUREMENTS

- 2,500 kg (5,511 lb) maximum lift capacity
- 5.79 m (19 ft) maximum lift height
- 3.35 m (10 ft 12 in) maximum forward reach

### PRODUCTIVITY

- 4 x 4
- 4 - wheel steer
- 3 steering modes:
  - front wheel steer
  - crab steer
  - coordinated steer
- Hydraulic line on boom
- Power assisted steering
- Hydrostatic transmission with variable displacement pump and motor
- Electro-proportional 4x1 joystick
- Limited slip differential on front axle
- Attachment holder plate - mechanical coupling
- Two-section door (glass upper/steel lower)
- Angle and length indicators on boom correspond to load charts
- Adjustable suspended seat with operator detection seat contact switch
- Battery disconnection switch
- Large diameter steering wheel
- Front & rear windscreen wipers
- Sunshield
- Roof protection grid
- Two side view mirrors & rear fish eye mirror
- Front & rear lights
- Side mounted engine for easy access to components
- Oil immersed, multi-disc brakes on front axle
- Self activated parking brake hydraulically released
- Lockable fuel tank
- Maintenance collar
- Road/jobsite switch
- Stability and load control system:
  - Load moment indicator with LEDs
  - Audible alarm
  - Automatic lock-out of boom extension and lowering

### POWER

- Deutz diesel 68 hp (50 kW), stage III

### TYRES

- 12-16.5" PR10. 8 holes wheel disc (DIN 70361)



## OPTIONS & ACCESSORIES

### PRODUCTIVITY

- Air conditioning
- Hydraulic inching by service brake pedal action
- Main electrical line on boom
- Additional hydraulic line on boom
- GM-1 Articulation for Manitou attachments\*
- Hydraulic quick coupling for attachments
- Adjustable spotlight on boom and cabin
- Windshield protection grid
- Wiper on cab roof
- 6 t towing hook
- Rear wheel alignment
- Winter fuel -22°C
- Low temperature hydraulic oil
- Biodegradable hydraulic oil
- 10 t hydraulic jack + 24 mm box wrench
- Special air filter
- Agri kit (towing hook, special air filter and electric rear connection)

### TYRES AND WHEELS

- Foam filled tyre 12-16.5" PR10
- Spare wheel 12-16.5" PR10
- Foam filled spare wheel 12-16.5" PR10
- Non-marking tyre 12-16.5" PR10
- Solid tyre 12-16.5" PR10
- Solid spare tyre 12-16.5" PR10

### ATTACHMENTS

- Floating forks L 1200 mm, section 100x40 mm
- GM-1 floating forks L 1200 mm, section 100x40 mm\*\*
- FEM 2 plate and forks kit
- FEM 2 forks with hydraulic side-shift (+/-100 mm)
- 500/800 L loading shovel
- 500 L concrete bucket (manual or hydraulic discharge)
- 250 L concrete mixing bucket (fully hydraulic)
- Brick-holder basket
- Fixed hook on plate
- 2 m mechanical extension jib, 1,250 kg capacity

### Enquiries from Europe:

Tel: +31 165 519 361  
Fax: +31 165 511 148  
Email: AWP-InfoEurope@terex.com

### Offices:

#### France

Tel: +33 (0)2 37 26 09 99  
Fax: +33 (0)2 37 26 09 98

#### Germany

Tel: +49 (0)4221 491 810  
Fax: +49 (0)4221 491 820

#### Spain

Tel: +34 93 572 50 90  
Fax: +34 93 572 50 91

#### Scandinavia

Tel: +46 31 57 51 00  
Fax: +46 31 57 51 04

#### The Netherlands

Tel: +31 165 519 361  
Fax: +31 165 511 148

#### UK

The Maltings  
Wharf Road  
Grantham NG31 6BH  
UK  
Tel: +44 (0)1476 584333  
Fax: +44 (0)1476 584334

#### Middle East

Tel: +971 4 399 0381  
Fax: +971 4 399 0382  
Email: AWP.Infome@terex.com

#### Russia & CIS countries

Tel: +7 495 660 32 30  
Fax: +7 495 660 32 29  
Email: info@terexrus.ru

### Corporate Headquarters:

#### United States

18340 NE 76th Street  
P.O. Box 97030  
Redmond, WA  
USA 98073-9730  
Tel: +1 425 881-1800  
Fax: +1 425 883-3475

### Distributed By:

\* Contact your sales representative for further information.

\*\* Only available with factory installed GM-1 Articulation for Manitou attachments.

Effective date: March, 2012. Product specifications and prices are subject to change without notice or obligation. The photographs and/or drawings in this document are for illustrative purposes only. Refer to the appropriate Operator's Manual for instructions on the proper use of this equipment. Failure to follow the appropriate Operator's Manual when using our equipment or to otherwise act irresponsibly may result in serious injury or death. The only warranty applicable to our equipment is the standard written warranty applicable to the particular product and sale and we make no other warranty, expressed or implied. Products and services listed may be trademarks, service marks or trade-names of Terex Corporation and/or their subsidiaries in the U.S.A. and many other countries. Genie is a Registered Trademark of Terex South Dakota, Inc. © 2012 Terex Corporation.