

# electric powered access



As a world leader in all-terrain working machinery, MANITOU is known for **INNOVATION, SAFETY and the QUALITY** of its product ranges. MANITOU designs and manufactures products **precisely adapted to the needs of its clients** (in construction, agriculture and industry). **Reliability, performance and simplicity of MANITOU** machines combine to make equipment of enhanced value. So it is natural that Manitou should bring all its expertise, and that of its network, to develop **electrical powered platforms specifically adapted for industry**.

You will find a **wide choice of platforms**, each perfectly suited to the needs of your business, whether for indoor or outdoor use, and whether you are a hirer or an operator. MANITOU also guarantees rapid and effective support. **Every situation is planned for.**

## Electric platforms a range of **11** models



V



VJR



AETJ



SE-SEC

# Articulated platforms



5 MODELS AVAILABLE:







( **120AETJ-C** ) — ( **150AETJ-C** ) — ( **170AETJ-L** ) — ( **150AETJ-L** ) — ( **170AETJ-L** )



## You can work around all obstacles, indoors or outdoors.

If you work in restricted and congested places such as warehouses, production areas, pedestrian zones, this range is the ideal solution. **Height, weight, manoeuvrability, multi-purpose application...** The self-propelled articulated electrical MANITOU platforms will answer all your needs, outdoors or indoors. **This can be in the 3D version for even more accessibility, or the Bi-Energy version for greater independence...** The choice is yours to find **the model best adapted to your conditions.**



**“I enjoy freedom  
of access and  
movement beyond  
compare.”**





# Articulated platforms

120AETJ-C / 150AETJ-C / 170AETJ-L / 150AETJ-L / 170AETJ-L



## Compactness and lightness

All our models are under 2 metres high with arms folded back and thus you can easily access all industrial buildings. The models designated 'compact' allow access to **very small or cluttered places**, and enable their ability to place objects in industrial sites. Our models **are easily transported** and offer excellent stability.



## Turning circle, overhang, height

You can reach the furthest places with ease whichever model is used. The 120 AETJ-C has the **best turning circle to compactness ratio in its category**. The 170 AETJ-L is noted for its **exceptional turning space and minimum overhang** when working without the need to move the machine. The pendular action greatly increases the size of the work area.



## 3D option

The 120 AETJ-C and 150 AETJ-C have the 3D pendular action and thus allow you to negotiate **flexibly around** obstacles such as piping, beams or pillars. This rotation system significantly increases your accessibility and working space for enhanced **productivity**.

## Most suitable working areas for **AETJ**

- **Second phase work:** air-conditioning, insulation, fire-detection systems, lighting, electric working, plumbing, fitting of windows, signs
- **Industrial use:** cleaning, warehouses, production areas, industrial maintenance
- **Placing of signs, gymnasiums etc.**
- **Building, renovation.**
- **Aeronautical industry:** inspection, maintenance, repairs
- **Temporary events:** preparation of exhibitions, entertainment/shows
- ...



Airports



Warehouses



“For my work, indoors and out, **everything** is under control.”





# Articulated platforms

120AETJ-C / 150AETJ-C / 170AETJ-L / 150AETJ-L / 170AETJ-L



## Robustness

You can count on your machine for a long working life. The reinforced structure of the arms increases the **rigidity** and the **comfort for the operator** through a well-balanced basket. On the ground, this stability equals **safety**, **whatever the height of working and the turning circle.**



## Safety at work

You can work in total safety. The AETJ platforms are equipped with safety **protection that complies with European safety directives:**

- the incline detector (elevation is automatically cut out if the gradient is greater than 3' or 5')
- the charging control
- the operating lever inside the basket and on the ground
- the system of negative braking (it requires a positive movement of the switch to be released)
- the safety pump to allow the operator to descend rapidly in case of emergency.



## Intuitive switches

You can easily operate your machine with the aid of intuitive proportional switches, which are ideal for **rapid application. The movement from above can be made neatly and safely.**



## Most suitable working areas for **AETJ**

- **Second phase work:** air-conditioning, insulation, fire-detection systems, lighting, electric working, plumbing, fitting of windows, signs
- **Industrial use:** cleaning, warehouses, production areas, industrial maintenance
- **Placing of signs, gymnasiums etc.**
- **Building, renovation.**
- **Aeronautical industry:** inspection, maintenance, repairs
- **Temporary events:** preparation of exhibitions, entertainment/shows
- ...



Industrial sites

**“I can carry out  
more work  
without moving  
my machine.”**





# Articulated platforms

120AETJ-C / 150AETJ-C / 170AETJ-L / 150AETJ-L / 170AETJ-L



## Comfort on the working platform

With the AETJ range you can be sure of good working conditions. Our baskets are **spacious, robust and safe**. The floor of the platform is **light-admitting** to improve ground visibility, and the **double handrails** enable you to avoid trapping your hands. Your **tools are always within reach**, thanks to the tool-racks. The drive lever can be **protected from being soiled during dirty operations** by a cover which ensures that your machine stays in good condition so as to **achieve a better resale value**.



## Independence

You increase your productivity with the **traction batteries**. Their independence and longer life respond to your need for intensive operation. The indicator on the control post allows you to check easily the state of charge of your machine.

## Simplified maintenance

The **integrated CAN-bus technology** facilitates a **rapid diagnosis** of the condition of your platform immediately and on-site. Furthermore, access to different components is easily facilitated enabling you to reduce the time the machine is out of use.



Most suitable working areas for **AETJ**

- **Second phase work:** air-conditioning, insulation, fire-detection systems, lighting, electric working, plumbing, fitting of windows, signs
- **Industrial use:** cleaning, warehouses, production areas, industrial maintenance
- **Placing of signs, gymnasiums etc.**
- **Building, renovation.**
- **Aeronautical industry:** inspection, maintenance, repairs
- **Temporary events:** preparation of exhibitions, entertainment/shows
- ...



Second phase work



Building sites



“I’m always **self-sufficient right from the start.**”





# Articulated platforms

120AETJ-C / 150AETJ-C / 170AETJ-L / 150AETJ-L / 170AETJ-L



## You increase productivity !

The Bi-Energy system is an **innovative process** which combines the silent and non-pollutant working of electrical technology with the autonomy of a Diesel engine. No longer is there a need to return to the charging station. Ideal for **intensive applications** which require indoor and outdoor operation.



## Long-term effect

The Diesel engine drives a generator which **transmits energy to the batteries**. You gain in independence from all electrical sources. When the batteries have run down, the engine takes over, allowing you to work while at the same time recharging the batteries.



## Usage inside and outdoors

The Bi-Energy platforms are truly **adapted to changes in environment**. You pass very easily from the **electric mode** working **indoors** (non-polluting, more economical) to the **Diesel mode** **outdoors**.



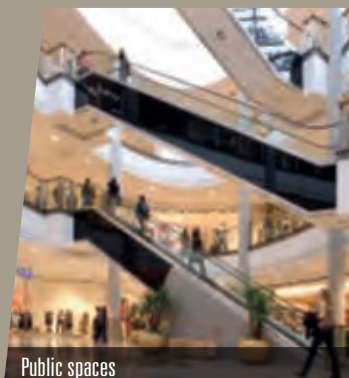
## Partial all-terrain models

The Bi-Energy models are fitted with semi-industrial tyres at low pressure. You can work outdoors on **non-firm ground**, and **indoors, without damage to the ground**. With their capacity for adhesion to the ground they facilitate safety of movement.

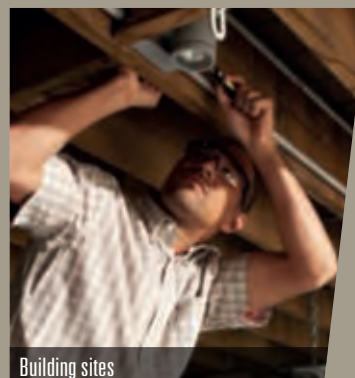


## Most suitable working areas for **Bi-Energy**

- **Second phase work:** air-conditioning, insulation, fire-detection systems, lighting, electric working, plumbing, fitting of windows, signs
- **Industrial use:** cleaning, warehouses, production areas, industrial maintenance
- **Placing of signs, gymnasiums etc.**
- **Building, renovation.**
- **Aeronautical industry:** inspection, maintenance, repairs
- **Temporary events:** preparation of exhibitions, entertainment/shows
- ...



Public spaces



Building sites

# Services MANITOU



## Proximity and availability as you require

**The infrastructure is at your service!** In addition to geographical proximity, you can rely on the technical expertise and advice of your MANITOU agents, at the time of purchase, and throughout the life of your machine. To help you work in the best possible conditions, MANITOU provides you with the best possible speed of delivery of spare parts for your equipment.







## Responsiveness and technical expertise which you need from a supplier

For the technical follow-up on your equipment you can rely on experienced professionals! You also can have the peace of mind of every MANITOU owner by calling on MANITOU experts, regularly retrained over the range of our products and available to answer your questions, whether you are an owner-operator or hirer. Maintenance and repair works are carried out on site following a simple telephone call, and in the time-frame agreed, According to your system of management you can plan and spread your maintenance charges and benefit from our offers of maintenance contract and/or extension of guarantee.

## Made-to-measure financing to protect your budget










You can plan the purchase of your platform with peace of mind using the MANITOU financing schemes. You have access to solutions that are simple and adapted to your needs and to the season. If you wish to make a speedy investment without exceeding your available funds, you should consider asking us for a tailor-made approach which takes your financial situation into account.

\* Manitou finance solutions available in certain countries.



**“ I can count on the reliability of the MANITOU equipment and their personnel. ”**

# 120 AETJ-C

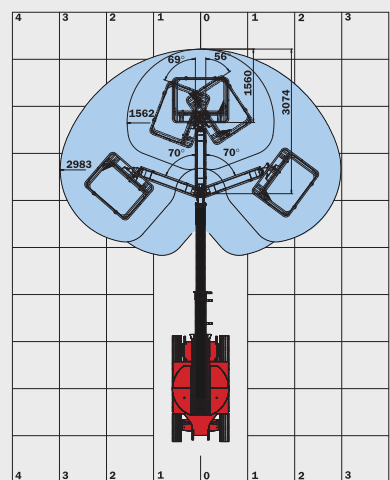
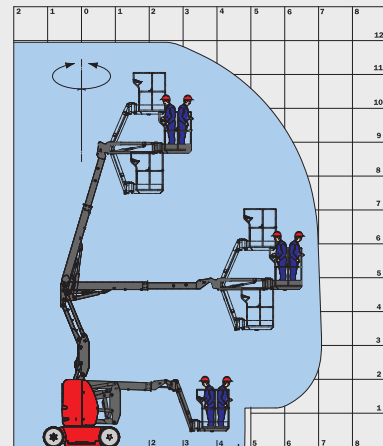
120 AETJ-C	
	<b>Working height</b> 11.95 m
	<b>Platform height</b> 9.95 m
	<b>Articulation height</b> 4.77 m
	<b>Outreach</b> 7.00 m
	<b>Jib tilting</b> +70° / -70°
	<b>Jib Movement</b> (option 3D) +70° / -70°
	<b>Basket rotation</b> 140°
	<b>Turret rotation</b> 355°
	<b>Capacity</b> 200 kg
	<b>Number of persons</b> (indoor/outdoor) 2/2
	<b>Basket</b> (width and length) 1.20 x 0.92 m
	<b>1. Overall width</b> 1.20 m
	<b>2. Overall length</b> 5.48 m
	<b>3. Overall height</b> 1.99 m
	<b>4. Overall length when folded</b> 3.74 m
	<b>5. Overall height when folded</b> 2.16 m
	<b>6. Interior turning circle</b> 1.55 m
	<b>7. Exterior turning circle</b> 3.25 m
	<b>8. Exterior turning circle</b> (option 3D) 3.44 m
	<b>9. Ground clearance</b> 10 cm
	<b>10. Wheelbase</b> 1.65 m
	<b>Speed of forward movement</b> 6 kph
	<b>Working speed</b> 0.60 kph
	<b>Maximum slope accessible</b> 25 %
	<b>Maximum tilt</b> 5 % / 3°
	<b>Tyres</b> 0.60 x 0.19 m
	<b>Driving wheels</b> 2 (back)
	<b>Steering/directional wheels</b> 2 (front)
	<b>Weight</b> 6660 kg (varies according to options & standards of the country)
	<b>Batteries</b> 240 Ah / 2 x 24 V
	<b>Integrated charger</b> 30 Ah / 48 V

## Standard equipment

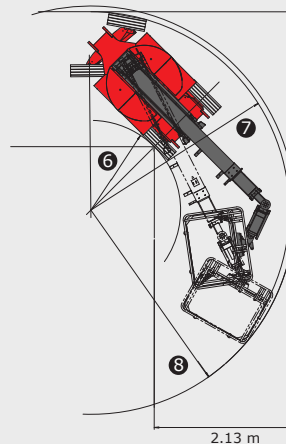
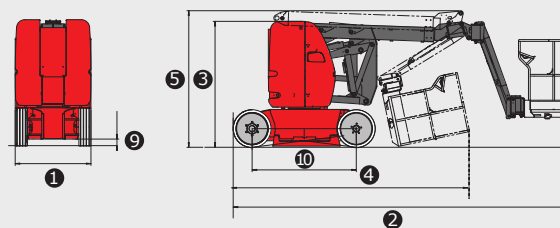
Proportional switches/levers  
 Forward movement possible at maximum height  
 Sound and visual alarm in case of excessive slant and overload  
 Integrated charger  
 Emergency manual descent  
 Negative braking system  
 Sound warning system inside the platform  
 Hour meter  
 Indication of state of charge of batteries  
 Hooks for sling loading/lifting  
 Integrated diagnostic aid  
 Predisposition 220V  
 Anti Roll System  
 Tyres with non-marking edges  
 Basket with transparent floor  
 Bus CAN technology  
 Tool box inside platform

## Optional equipment

Flashing lights  
 Working light  
 Predisposition of air  
 Predisposition of water  
 230V power input with differential circuit-breaker  
 Special paint  
 Biodegradable oil  
 Rotation of pendulum arm (3D)  
 High capacity battery (300 Ah / 2 x 24 V)  
 Central topping up of batteries  
 Warning signal moving forward  
 Warning signal for all movements  
 Protective cover for instruments panel  
 Initial certificate of verification prior to entry into service  
 Safety harness



Option 3D: Jib Movement



2.13 m

This brochure describes versions and configuration options for Manitou products which may be fitted with different equipment. The equipment described in this brochure may be standard, optional or not available depending on version. Manitou reserves the right to change the specifications shown and described at any time and without prior warning. The manufacturer is not liable for the specifications given. For more information, contact your Manitou dealer. Non-contractual document. Product descriptions may differ from actual products. List of specifications is not comprehensive. The logos and visual identity of the company are the property of Manitou and may not be used without authorisation. All rights reserved. The photos and diagrams contained in this brochure are provided for information only.

MANITOU BF SA - Limited company with board of directors - Share capital: 39,547,824 euros - 857 802 508 RCS Nantes



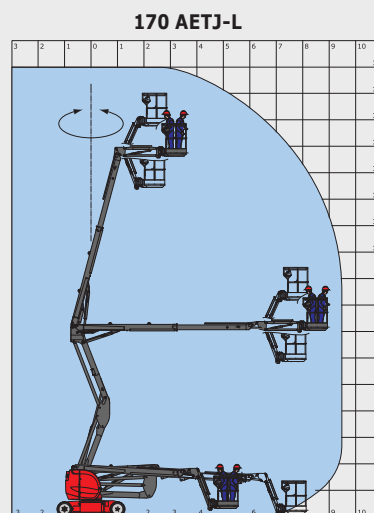
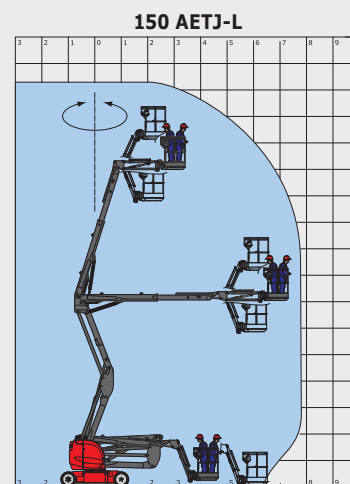
FT014EN\_A\_0812\_120AETJC



# 150 AETJ-L / 170 AETJ-L



	150 AETJ-L	170 AETJ-L
<b>Working height</b>	15.40 m	17 m
<b>Platform height</b>	13.40 m	15 m
<b>Articulation height</b>	7.27 m	
<b>Outreach</b>	7.81 m	9.43 m
<b>Jib tilting</b>	+70° / -70°	
<b>Basket rotation</b>	140°	
<b>Turret rotation</b>	355°	
<b>Capacity</b>	230 kg	
<b>Number of persons</b> (indoor/outdoor)	2/2	
<b>Basket</b> (width and length)	1.20 x 0.92 m	
<b>1. Overall width</b>	1.90 m	
<b>2. Overall length</b>	6.10 m	6.97 m
<b>3. Overall height</b>	2.10 m	
<b>4. Overall length when folded</b>	4.53 m	5.25 m
<b>5. Overall height when folded</b>	2.13 m	
<b>6. Interior turning circle</b>	1.97 m	
<b>7. Exterior turning circle</b>	4.27 m	
<b>8. Exterior turning circle</b>	4.85 m	
<b>9. Ground clearance</b>	17.5 cm	
<b>10. Wheelbase</b>	2.20 m	
<b>Speed of forward movement</b>	6 kph	
<b>Working speed</b>	0.60 kph	
<b>Maximum slope accessible</b>	25 %	21 %
<b>Maximum tilt</b>	9 % / 5°	
<b>Tyres</b>	27-10-12	
<b>Driving wheels</b>	2 (back)	
<b>Steering/directional wheels</b>	2 (front)	
<b>Weight</b>	6435 kg	7435 kg
(varies according to options & standards of the country)		
<b>Batteries</b>	300 Ah / 2 x 24 V	
<b>Integrated charger</b>	45 Ah / 48 V	
<b>Engine</b>	Lombardini FOCS 702 water cooled	
<b>Power</b>	9.20 kW	
<b>Generator</b>	5.70 kW / 48 V - 100 Amp / 2500 rpm	

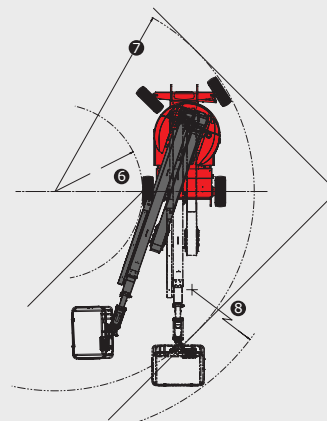
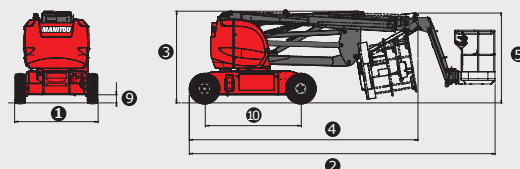


## Standard equipment

Proportional switches/levers
Forward movement possible at maximum height
Sound and visual alarm in case of excessive slant and overload
Integrated charger
Emergency manual descent
Negative braking system
Sound warning system inside the platform
Hour meter
Indication of state of charge of batteries
Hooks for sling loading/lifting
Integrated diagnostic aid
Predisposition 220V
All road wheels - Non marking
Basket with transparent floor
Bus CAN technology
Tool box inside platform

## Optional equipment

Flashing lights
Working light
Predisposition of air
Predisposition of water
230V power input with differential circuit-breaker
Special paint
Biodegradable oil
Central topping up of batteries
Warning signal moving forward
Warning signal for all movements
Initial certificate of verification prior to entry into service
Safety harness
Oil for extreme low temperatures
Battery frost protection



This brochure describes versions and configuration options for Manitou products which may be fitted with different equipment. The equipment described in this brochure may be standard, optional or not available depending on version. Manitou reserves the right to change the specifications shown and described at any time and without prior warning. The manufacturer is not liable for the specifications given. For more information, contact your Manitou dealer. Non-contractual document. Product descriptions may differ from actual products. List of specifications is not comprehensive. The logos and visual identity of the company are the property of Manitou and may not be used without authorisation. All rights reserved. The photos and diagrams contained in this brochure are provided for information only.

MANITOU BF SA - Limited company with board of directors - Share capital: 39,547,824 euros - 857 802 508 RCS Nantes



Your nearest **MANITOU** dealer:



Head office:  
B.P. 249 - 430 rue de l'Aubinière - 44158 Ancenis Cedex - France  
Tel: 00 33 (0)2 40 09 10 11 - Fax: 00 33 (0)2 40 09 10 97  
[www.manitou.com](http://www.manitou.com)